

INTRODUCING THE ALL NEW

Pope ProPass 600 Canna Still



HIGHEST PERFORMANCE - GREATEST THROUGHPUT / PRICE RATIO

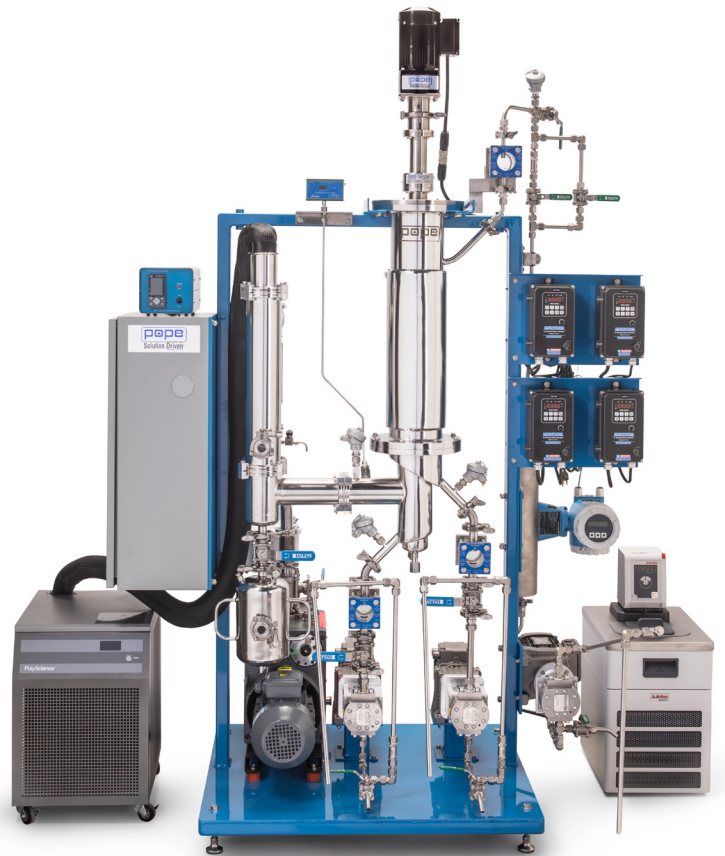
Description:

Recognized for decades for molecular distillation excellence, Pope Scientific proudly presents the ProPass 600 series of Canna Stills. This single-stage wiped-film distillation system contains the core essentials for reliable, round the clock operation. All 316L stainless steel construction with no glass except for armored sight glasses, provides durability and high heat transfer rates for maximum efficiency and throughput.

The ProPass 600 has been developed from Pope's 7+ years of experience in the cannabinoid distillation industry, backed by over 45 total years of wiped-film experience. This design includes new high performance gear pumps, oversized vacuum pump, a compact, heavy-duty frame and more. The result is an industrial machine ready to take on a wide quality range of extracts and provide high purity and yield distillate product. And as always, backed by Pope's unmatched customer service and technical guidance after the sale!

Versatility:

The system comes ready to process the two typical passes – terpenes removal and cannabinoid distillation. Additional passes are also possible. For large feed lots, two ProPass modules linked together is highly recommended for optimization of daily throughput and minimization of maintenance and cleaning/drying time between passes. Linking together more units is also possible at any time.



Key Features:

- Up to 10 L/hr feed rate
- Single point power distribution panel
- New high performance liquid and vacuum pumps
- All wiring to NEC industrial standards
- 316L SS used on all wetted metal parts
- Also available in 4", 9", 12" and 20" ProPass sizes
- USA designed and manufactured
- Industrial duty and performance

CANNABIS SITE: WWW.POPECANNABISDISTILLATION.COM | 262-268-9300

 @POPESCIENIFICINC | MAIN SITE: WWW.POPEINC.COM | MANUFACTURED IN WI, USA

INTRODUCING THE ALL NEW

Pope ProPass 600 Canna Still



The Pope ProPass At A Glance:

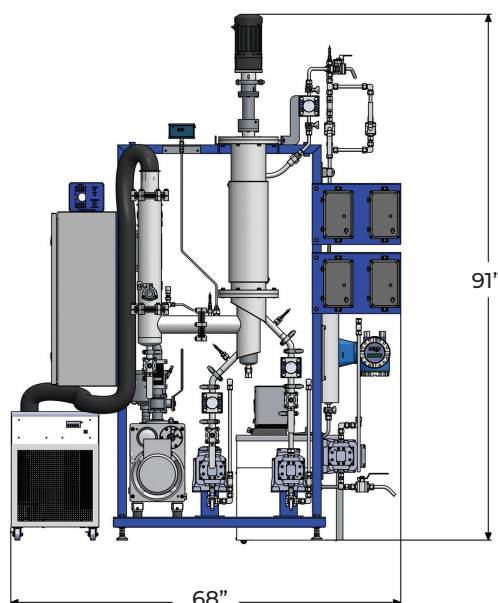
- Developed to provide the greatest reliable throughput per dollar possible!
- Choice of electric band or hot oil jacket heating.
- An industrial duty no-frills, robust and efficient 6" Wiped Film cannabinoid still.
- Designed as an all 316L stainless steel system, not a modification of a glass standard still system.
- Features a single-stage system capable of performing the typical two types of passes for cannabinoid distillation or for other special one-pass applications.
- Modularly designed for expansion of production needs, and easy linking of extra stages in a series if required - no need to purchase "all at once."
- Includes the basics for what is necessary to start continuous processing right out of the crate, with the option to upgrade components based on a customer's preferences and budget.

Optional Packages:

To suit the unique preferences and budget of the operator, a variety of options are available including:

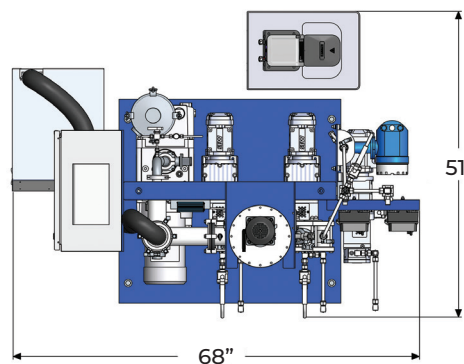
- Hot Oil Heating Substitution Package
- Feed Rate Display & Control Package
- Real-time Distillate Percentage Display Package, (eliminating bucket & stopwatch verifications)
- Vacuum Booster Package (Diffusion or other types)
- Automatic Vacuum Control Package
- Data Recording & Management Package
- Feed & Receiver Vessel Package Choices
- Contact Pope for more details regarding pricing and packages available.

Dimensional Diagram:



General Specifications:

| | |
|---|---|
| Footprint | 68"W x 51"D x 91"H |
| Electrical | 208V, 3-phase (WYE), 75 FLA (Others avail.) |
| Warranty | Limited 2 year warranty |
| Feed Rate | Up to 10 kg/h |
| Evaporator diameter | 6" |
| Evaporator surface area | 0.22 m ² |
| Internal condenser surface area | 0.35 m ² |
| Vacuum capacity | 29.7 CFM |
| Ultimate vacuum (clean and dry) | 0.01 to 0.02 Torr |
| Internal condenser chiller range | -35°C to 150°C |
| Immersion chiller operating temperature | -80 to -60°C |



Heating Band version shown. Consult with Pope for Hot Oil version.